

RPMGLOBAL



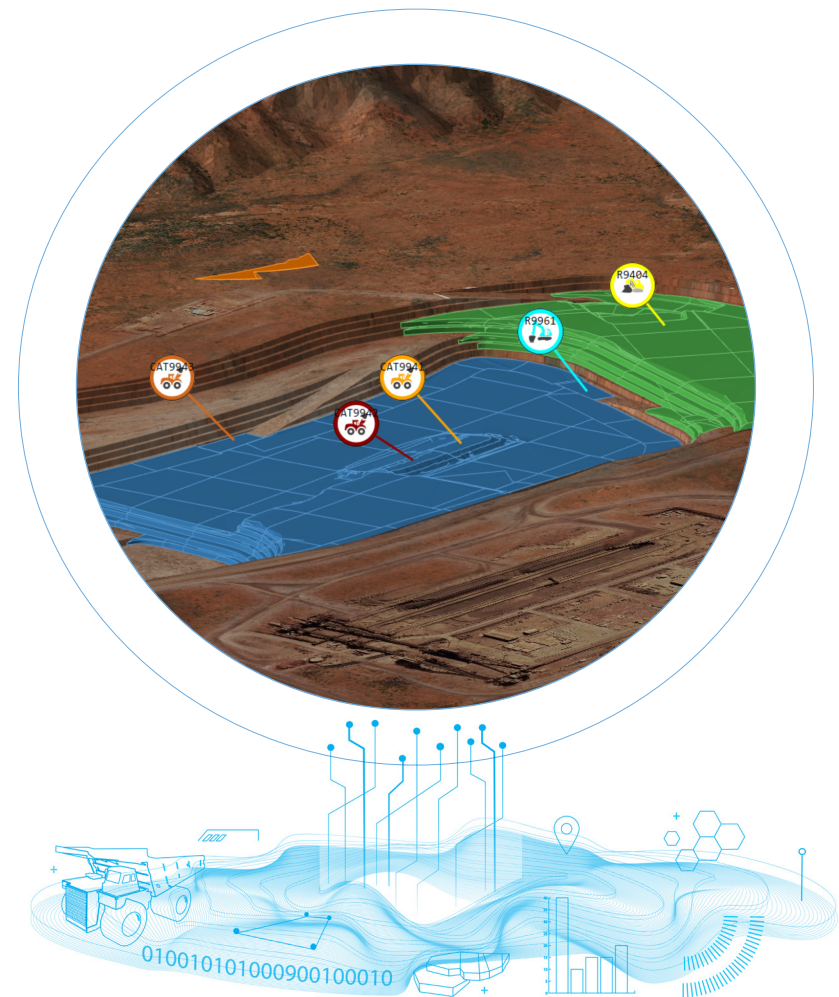
RPM MinePlanner

RPM MinePlanner is the next generation of mine scheduling software built on the foundation of RPM's 40+ years of planning and scheduling expertise.

It is an evolution of the industry's most used scheduling solution combining all methods and commodities into one single mine planning package, and Enterprise backend. Often copied but never matched, RPM scheduling has been setting the standard for the mining industry for decades.

For over 40 years the mining industry has relied on RPM to push the boundaries and advance mine scheduling solutions. RPM's MinePlanner epitomises that journey taking a complex process and simplifying it to provide Design, reserving, Haulage, Dumping, and Scheduling in one easy to use package.

The underlying scheduling engine has had a complete redesign to deliver the most sophisticated, most powerful, most capable, and most flexible solution ever; putting RPM MinePlanner even further in front of any mine scheduling tool. From an individual site to multi-site global operations, RPM MinePlanner provides a proven solution and powerful scheduling engine that does all the heavy lifting without compromising sophistication and capabilities.



A Truly Integrated Solution

Smart scheduling



MinePlanner introduces Smart Scheduling that uses a discoverable engine combining automated, manual and hybrid scheduling into one.

Product Optimiser



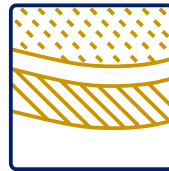
RPM's integrated Product Optimiser finds the best way to process, blend and stockpile products to maximise value. All in an easy to use click and drag interface.

Live Reporting



MinePlanner introduces Live Reporting. Live Reporting keeps your reports in sync with your schedule so reports are always in real-time and available.

Automated Reserving



MinePlanner automatically creates the scheduling reserves from geology and design, whilst handling large models.

Haulage Modelling



Detailed haulage modelling of every movement in the mine with automatic reporting of equipment requirements.

Destination Scheduling



Simultaneously schedules mining and dumping, so you know the source and destination of every step.

Equipment Modelling



MinePlanner uses a single resource. You tell it what you need to do and MinePlanner automatically determines the best resource for each stage.

Material Movement



RPM MinePlanner automatically allocates material movement based on the ideal place for each haul. Waste, ore and dumping is all considered simultaneously.

Benefits

Smart scheduling

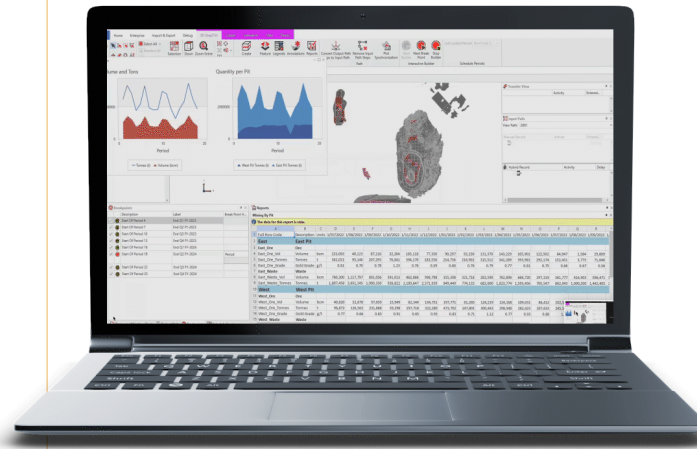
RPMGlobal pioneered Automated Scheduling in the mining industry, giving engineers a 100% script-free solution to generate practical schedules in a fraction of the time it would otherwise take. MinePlanner has evolved to introduce Smart Scheduling. Smart Scheduling provides a heuristic-based engine that combines automated, manual and hybrid approaches and tools. The engine balances out all the activities on site, such as equipment modelling and material movement, so there's no need to go back once the schedule is complete. Taking your schedule down to this level produces a more practical and achievable plan from an operational standpoint. Smart Scheduling delivers more than a workflow, it delivers the intelligence to make MinePlanner easy to use and learn.

Integrated Product Optimiser

RPM MinePlanner is the only scheduling solution of its kind that can compare and optimise complex options, ensuring the optimal mining decisions are realised, enabling users to identify the most cost-effective scheduling and extraction sequence. Always meet product targets and qualities.

"RPM's Product Optimiser automatically finds the best way to process, blend and stockpile mined materials to maximise the value of one or more products.

With their intuitive, process-driven user interface, highly automated mining rules and extremely rapid scheduling speed, Engineers can focus on delivering value knowing the solution has the mining logic covered. You are no longer forced to accept the best option the planner can produce manually in the limited time available. Our scheduling solutions give Engineers the opportunity to explore alternative 'what if' scenarios and truly understand how best to drive the mines production in changing market conditions.



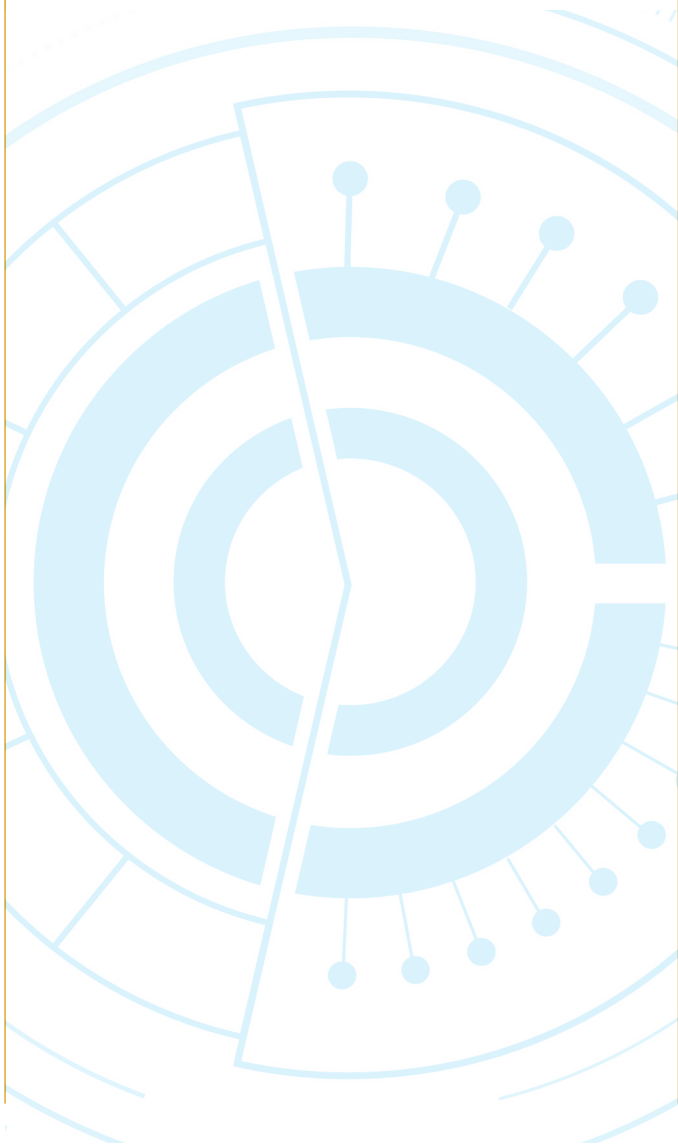
Breakpoints

Smart Scheduling provides Breakpoints so you can pause the schedule at any point in time or run until a key event occurs. This gives planners the opportunity to see where the major equipment is operating, either in the 3D animation or on the Gantt chart, and adjust the schedule accordingly. Once you are happy to a point in time, lock the schedule and work on improving the next period. Iteration is the art of scheduling and Breakpoints allow you to refine more effectively without diluting the schedule output.

Live Reporting

MinePlanner introduces a completely new reporting methodology keeping your reports in sync with your schedule. Live Reporting is real time reporting so as you are scheduling and making changes, the reporting updates automatically. It is faster and 100% integrated with the core scheduling engine giving you the information you need as you need without having to continuously rerun the schedule to find your answers. Reporting provides the most value in the midst of making scheduling decisions and RPM has yet again set the industry benchmark in flexibility, speed and accuracy.

Suitable for all commodities and mining methods



Coal

MinePlanner has specific functionalities for coal miners, including:

- Gas drainage for underground
- Ability to define how customised panels, headings and longwalls intersect major features
- Conveyor modelling
- Rules-based coal seam aggregation that converts the in-situ model into working sections
- Integrated and dynamic haulage
- Control of wash density and quality targets

Metals

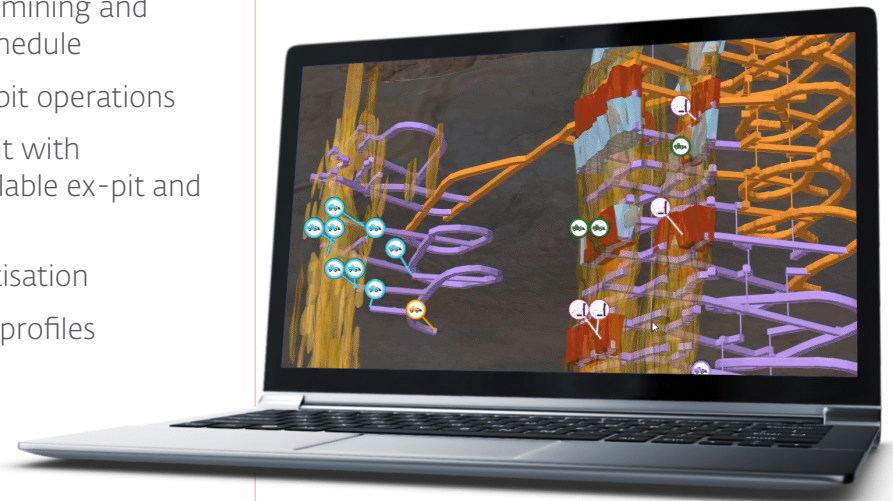
The solution has built-in capabilities for both open pit and underground metal operations:

- Destination scheduling
- Simultaneous planning of mining and dumping as part of the schedule
- Detailed haulage in open pit operations
- Optimise waste placement with comparison between available ex-pit and back-fill dumping options
- Stope development prioritisation
- Production & backfill rate profiles

Potash

RPM MinePlanner is able to:

- Monitor deployment of all equipment on a synchronised animation plot
- Model conveyors to act as a constraint on overall production
- Use dynamic stratigraphic design to display how panels respond as the mine layout is created and adjusted
- Consider collapse zones, lease boundaries, wells and more
- Automatically incorporate the additional strata into working sections



Diamonds

As a leading scheduling solution, MinePlanner has evolved to cater for the specialities of Diamond mining, being able to:

- Model detailed haulage activities
- Geology integration to keep schedules up-to-date
- Mining rules that consider bench access and drop-cut locations
- Automatically generate ramp, trim and production blasts on each bench
- Understand the intricacies of the extraction schedule

Phosphate

MinePlanner has been developed to:

- Generate optimal pit designs and scheduling using sophisticated algorithms, taking into account the specific characteristics of phosphate deposits
- Facilitate the creation of optimal blending strategies that maximise product quality and meet market specifications while minimising costs

Oil Sands

With added functionalities for Oil Sand miners, MinePlanner can:

- Simultaneously schedule the depletion of the mine and the construction of tailings dykes in oil sands
- 2-pass scheduling algorithms and dynamic haul route modelling to identify the best possible bitumen production schedule

Quarries

Developed for Quarry operations, RPM MinePlanner provides:

- Detailed equipment modelling to track the source and destination of every material movement, resulting in detailed time analysis
- Incorporate crushing characteristics of mined material when evaluating aggregate production strategies in quarry mines



About RPMGlobal

For over 50 years RPMGlobal has been Advancing Mining with advice and technology solutions that provide a step-change to the accepted process. We help mining operations extract more value through innovative software solutions, Advisory and consulting services and mining experience.

Guided by our underlying principles of mining expertise, innovation and sustainability, we strive to create safer, more efficient and more sustainable operations for our customers. Our focus on providing advanced mining technology, together with deep domain expertise across the mining lifecycle enables us to guide customers through the current and emerging challenges being faced by the industry worldwide.

For more information visit rpmglobal.com or [email info@rpmglobal.com](mailto:info@rpmglobal.com)



Any commodity, any method,
anywhere... **RPM MinePlanner**