

RPMGLOBAL

XPAC

SOLUTIONS



RPMGlobal (RPM) redefines mine planning and scheduling. It is the new benchmark and the only solution purpose built for the mining industry. There is no other solution that can match the 45+ years RPM have focused on to deliver the industry standard today.

Underpinning RPM's XPAC Solutions is a powerful scheduling engine that does all the heavy lifting without compromising sophistication and capabilities. From an individual site through to multi-site and global operations, the parametric approach adopted by XPAC Solutions means Engineers can amplify their decision-making process. This embedded intelligence, together with our intuitive user interface, increases mine productivity and provides rapid ROI with a solution that is scalable, intuitive and fast to learn.

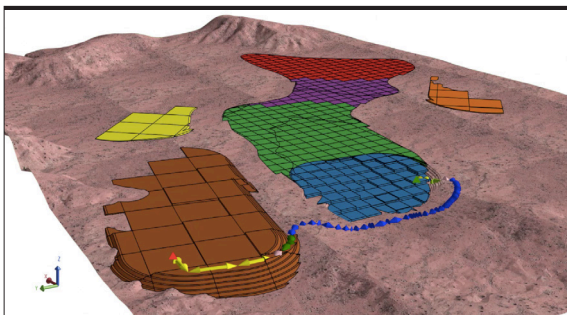
XPAC Solutions is the only Enterprise Planning solution that complies with industry standards and aligns to ISA-95 delivering true collaboration across the mining value chain.

Benefits

Intuitive, Practical Scheduling Rules with a Process Driven UI.

With a process driven workflow that's 100% script free, Solutions are fast to implement and even faster to learn. The mining rules, targets and objectives used to control the schedule have been tailored for specific commodities and mining methodology, ensuring optimal schedules that are both practical and feasible.

The sequential steps that form the scheduling process eliminates the need for complicated scripting and costly consultants. Rather than complex menus and options hidden within deeply nested dialogues, the repeatable process provides every option exactly when and where required. Whether they last used the solution yesterday or six months ago, planners will be up and scheduling in no time.



Data modelling

Fastest Scheduling Engine

Solutions automated reserving not only rapidly builds scheduling reserves from geology and design but it supports massive models whilst still building scheduling databases automatically.

It doesn't matter if there is one mine or many mines, and if each mine has several pits, a shaft or a combination, the robust data modelling that underpins every solution ensures detailed practical schedules can be generated efficiently and rapidly. With one planning solution, you can be confident a robust, consistent approach to planning is adopted across all sites.

Big Data

Regardless of where data is sourced, Solutions read it in its native format without the need for translations and manual manipulation. The parametric, process-driven approach adopted by our solutions make it easy to re-align production schedules when key underlying data changes. Whether it's an updated geological model, a new pit design or a revised dumping permit, it's easy to incorporate the new data into the schedule.

Multi-scenario analysis

With their intuitive, process-driven user interface, highly automated mining rules and extremely rapid scheduling speed, Engineers can focus on delivering value knowing the solution has the mining logic covered. You are no longer forced to accept the best option the planner can produce manually in the limited time available. Our scheduling solutions give Engineers the opportunity to explore alternative 'what if' scenarios and truly understand how best to drive the mines production in changing market conditions.

"If you want to unlock value from your deposit, this is the application to use as it allows you to look at multiple scenarios and ask a lot of "what if" questions and add value in a short period of time"

Knowell Madambi

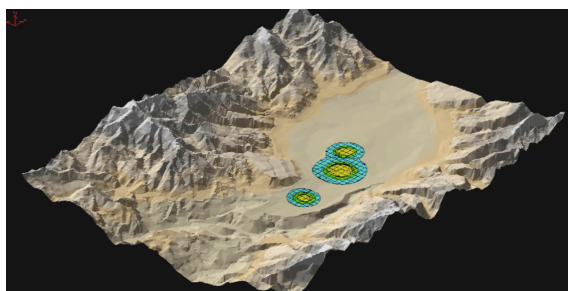
Technical Services Manager, OceanaGold

Dynamic Scheduling

Solutions allow both manual interactive and automatic scheduling techniques in the same schedule, giving Engineers the flexibility to work in detail, when required, and let the speed and power of auto-scheduler take over the more tedious tasks. And whether the users schedules manually, automatically, or with a combination of both techniques, advanced destination scheduling automatically manages the movement of waste to dumps and the Product Optimiser finds the best way to process the ore and manage any stockpiles.

Integrated Product Optimiser

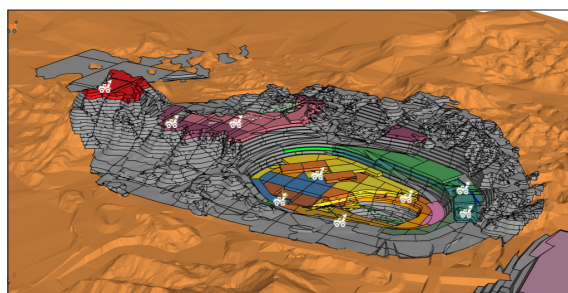
Always meet product targets and qualities. Automatically find the best way to process, blend and stockpile mined materials to maximise the value of one or more products. Unlike other mine planning solutions, XPAC Solutions is the only scheduling solution of its kind that can compare and optimise such complex options, ensuring the optimal mining decisions are realised, enabling users to identify the most cost-effective scheduling and extraction sequence.



Process driven interface

Only Fully Integrated Scheduling Processes

Solutions manages the entire scheduling process within one application. It has destination scheduler and haulage modelling integrated as part of the process. It is possible now to simultaneously schedule mining and dumping as part of the schedule. It also means detailed haulage modelling of every movement in the mine is captured providing a true reflection of what is happening onsite. Combined with RPM's equipment library, users can now compare schedulers with a range of different haulage configurations, which is all underpinned by RPM's simulation technology which is relied upon by most of the major OEM's.



Dynamic scheduling

True Enterprise Mining Solution

Solutions capability to digest data from any software application across the mining value chain, together with RPM's Enterprise Planning Framework (EPF), makes it the only Enterprise-enabled software application in mining. It seamlessly can integrate with financial systems, ERP's and Fleet Management Systems to deliver one truth.

INTELLIGENT SCHEDULING

Open Cut Coal Solution

Underground Coal Solution

Steeply Dipping Coal Solution

Open Pit Metals Solution

Underground Metals Solution

Open Pit Diamond Solution

Oil Sands Solution

Quarry Solution

Stratigraphic Metals Solution

Open Cut Phosphate Solution

Underground Diamond Solution

XPAC
SOLUTIONS

About RPMGlobal

RPMGlobal is the global leader in the digital transformation of mining. We provide data with context, transforming mining operations. Our Enterprise approach, built on open industry standards, delivers the leading digital platform that connects the systems and information and seamlessly, amplifying decision-making across the mining value chain.

RPMGlobal integrates the planning and scheduling, with maintenance and execution, with simulation and costings, on RPM's Enterprise Planning Framework, the mining industry's only digital platform that delivers insight and control across these core processes.

RPMGlobal's Advisory Team advise the global mining industry on their most critical issues and opportunities, from exploration to mine closure. Their deep domain expertise, combined with their culture of innovation, and global footprint, ensures our mining customers continue to lead.

RPMGlobal is the global leader in Enterprise mining software, Advisory services and Professional development who operate offices in 23 locations across 13 countries and have worked in over 118 countries.

For more information visit rpmglobal.com
or email info@rpmglobal.com.