

RPMGLOBAL



Company Overview

For more than **50 years**
we have been the mining
industry's go-to partner for
Advisory and Consulting,
Software and Training.

GLOBAL CLIENT BASE

GOLD, COPPER, IRON ORE,
BATTERY MINERALS,
FERTILIZER MINERALS,
COAL AND OIL



GLOBAL COMMODITY LEADERS

50
YEARS

125
COUNTRIES

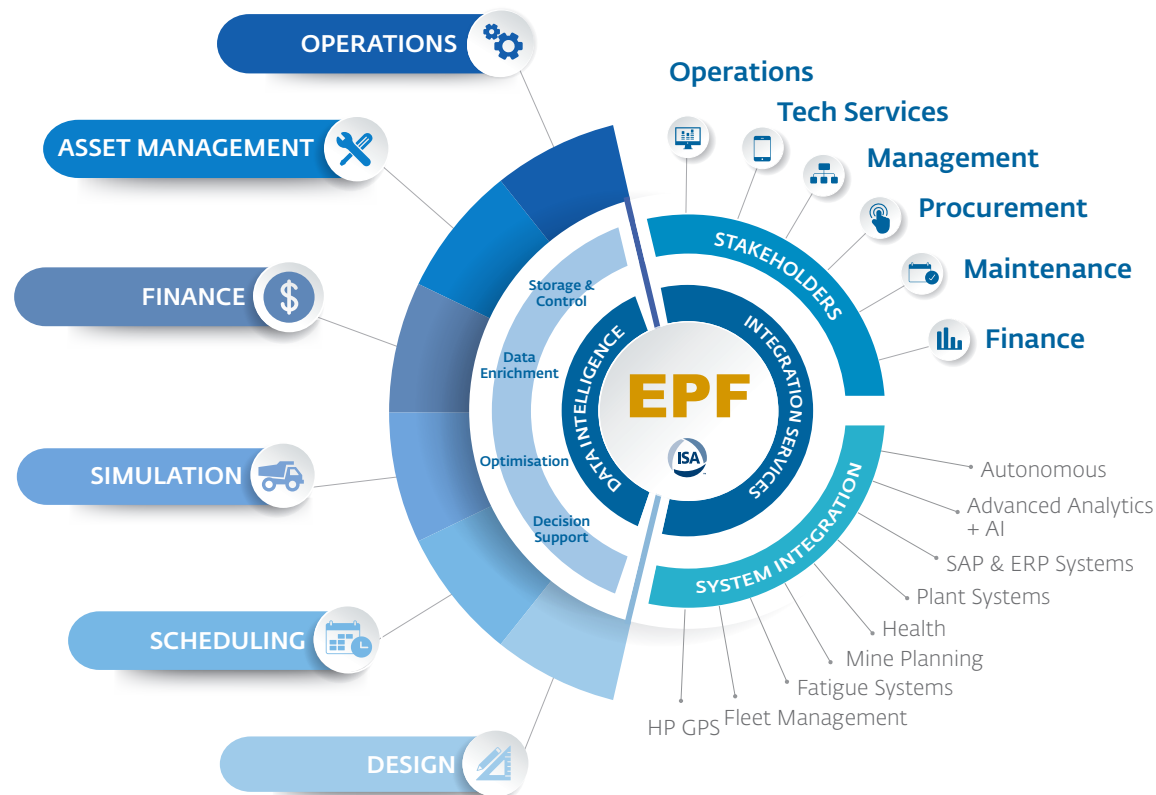
22 OFFICES
GLOBALLY

Our story

RPMGlobal Holdings Limited (ASX: RUL) [RPM] is a global leader in the provision and development of Mining Software Solutions, Advisory Consulting Services and Professional Development.

With history stretching back to 1968, RPMGlobal combines its deep domain expertise with end-to-end enterprise solutions to ensure our mining customers continue to lead.

At RPMGlobal we take an intelligent approach to mining by integrating mine planning, maintenance, simulation, financial and operational systems using our unique Enterprise Planning Framework (EPF). RPMGlobal's EPF is the mining industry's only digital platform that delivers insight to core planning stakeholders through enterprise system integration.



With contracts and services rendered in more than 125 countries
around the world, we operate out of offices in 22 locations across 11 countries.



Design

RPMGlobal's innovative design solutions use parametric modelling to automate what are typically manual, tedious processes for mine designers. Our highly graphical and interactive solutions comprise a set of powerful tools to allow rapid updating and change of the design to evaluate different scenarios. This allows many alternative designs to be generated for consideration by a mine design user. The user simply changes the necessary parameters and then re-runs their model to generate a mine design based on those changes.

The design solutions utilise the latest optimisation technologies such as RPMGlobal's Strategic Design Optimiser. SDO is the only product that integrates the complex tasks of stope and development optimisation into a single, coherent process.





Scheduling

Built on 40+ years of mine planning and scheduling expertise, our suite of scheduling solutions cover all time horizons from ultra short-term to strategic life of mine. Our solutions have been built on the mining industry's leading scheduling platform and cover every commodity and mining method.

RPMGlobal's scheduling solutions combine our unique Product Optimiser with modern user interfaces enabling planners to build schedules that are easy to understand and communicate with a coherent link between planning horizons and operational execution. They are 100% script-free providing agility to put the power directly back into the hands of the engineer as it minimises time-consuming weekly planning demands while helping to deliver high levels of predictability across the value chain.

The enterprise platform provides data feeds with the most up-to-date schedule inputs and allows for schedule outputs to be automatically pushed to downstream systems, closing the loop between different departments, planning and execution.

XPAC Solutions are a suite of commodity-based mine planning based mine planning solutions that cover virtually every commodity and mining method. They are used every day by leading mining companies all over the world.



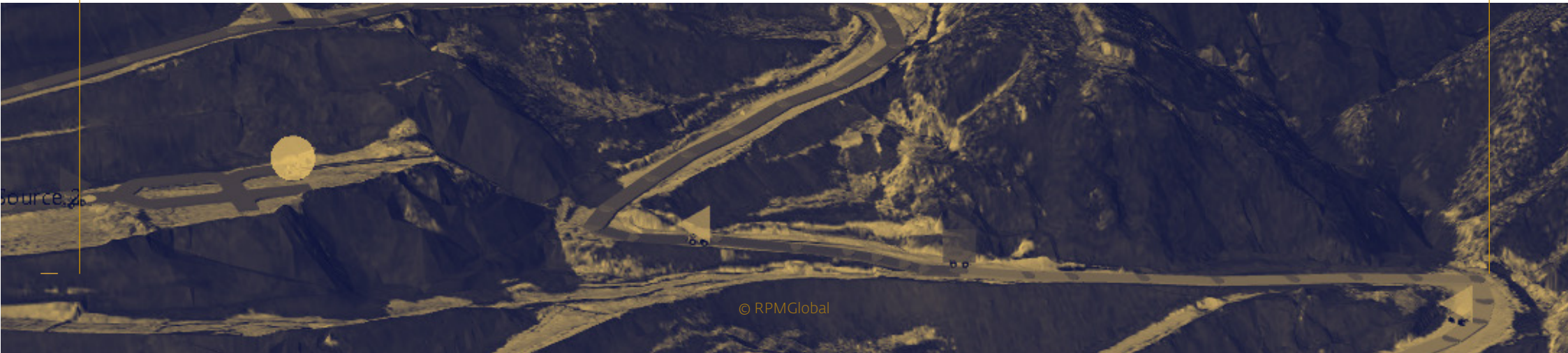


Simulation

RPMGlobal provides the mining industry's only Discrete Event Simulation (DES) solutions specifically built for both miners and Original Equipment Manufacturers (OEMs). These unique simulation solutions can be used to support activities ranging from short-term planning and equipment selection, to capital investment and can be used in both open pit and underground operations.

With a 3D DES engine at its core, it is the only mining simulation software that can quantify the impact of changes as the models reflect the complex and dynamic nature of a mine site in its entirety; including the variability, interactions and dependencies that occur in these systems. Decisions with regards to the mine haulage system can be based on real data, giving the user the ability to test multiple 'why' and 'what-if' scenarios to reduce operating costs through optimised performance, and ensure overall operational safety and efficiency.

The solutions enable the user to leverage data to build a 'digital twin' of any mining operation – open pit or underground – to deliver an accurate representation of any mine sites haulage operations, actively demonstrating the impact any changes will have. It is being used all over the world by miners, contractors and OEMs to improve efficiency every day.





Finance

Our market leading financial modelling, budgeting and forecasting tools have been used by the mining industry for many years by organisations all over the world. XERAS Enterprise is unique in that it can deliver a Zero-Based-Budget (ZBB) using the mine's physical attributes to generate a financial budget based on what has been scheduled to be mined rather than using last year's actuals or budget as the starting point for next year's forecast.

With integration available to any ERP, and being SAP-Certified, it will deliver a live forecasting environment. This significantly reduces the time it takes to generate budgets and forecasts, delivering companies an accurate financial position at any given time.

The solutions are certified for integration with SAP and unlock unprecedented levels of visibility, control, and agility in enterprise financial planning. It is the mining industry's leading ZBB solution and is a true enterprise platform for the cost-focused organisation.



Asset Management

At the heart of RPMGlobal's maintenance solutions is our Dynamic Lifecycle Costing Calculator (DLCC). DLCC is the process of forecasting, in real-time, every maintenance event for an asset to the end of its life, including the expected future cost and performance of the asset. AMT allows asset managers to identify potential issues, save money and avoid costly down time.

Maintenance should be a cycle of continuous improvement to better equipment performance and processes. In order to do this effectively, you need the ability to measure and manage information about your fleet. AMT allows you to be proactive about asset management by identifying asset life cycle risks and opportunities, and controlling and reducing maintenance spend. In minimising unplanned downtime and reporting and analysing the critical engineering and maintenance process you can evaluate the application and operational drivers of asset performance.

AMT can be added to a miner's existing ERP solution and is designed to complement the ERP without replacing key functionality and it will not impact any routine that generates a financial transaction.

AMT is trusted by mining companies, contractors, dealers as well as major OEMs around the world to help measure and manage their continuous improvement journey.





Operations

Today's agile mining organisations demand trust and confidence in data. RPMGlobal's operational solutions turn your data into powerful insights by validating, normalising and storing multiple operational capture systems into one.

RPMGlobal's Operational solutions ensure continuity of planning is carried across the operational teams and break down silos across the business.

Often in mining there is no single source of data on mine sites. This leads to a lack of confidence and trust in the numbers that drive critical decisions. RPMGlobal's MinVu underpins reliable decision-making based upon trustworthy information. It will automatically structure, filter and validate huge quantities of data and consolidate this into information with context. Mining companies now have one single source of truth across the value chain, ensuring a trustworthy source of information to base decisions upon.

MinVu Shift Manager is a mine engineering software solution for short term planning and execution that allows users to collaborate and communicate through a single integrated web-based plan. By updating in real-time, Shift Manager allows users to proactively respond to intra-shift changes allowing course correction to get back on track. Shift Manager will increase efficiency, safety and shareholder value by ensuring compliance to plan.



Advisory

RPMGlobal's Advisory team advise the global mining industry on their most critical issues and opportunities, from exploration through to rehabilitation and mine closure. This extends cross physicals, financials and environmental, social, and governance (ESG) factors and commitments, including helping customers meet the shift in social norms and consumer and investor expectations to zero-carbon. We draw on our deep domain mining expertise to provide practical and pragmatic advice that enables companies to manage their operations in a more sustainable way.

For more information visit

 www.rpmglobal.com/consulting-advisory/



Mining Project Services



Investor Services



Operational Services



ESG Services

Training

Terminology

RPMGlobal has been the go-to provider of professional development and software training for the mining industry for more than 40 years. Our trainer's talk-the-talk of mining to deliver the most comprehensive suite of learning outcomes for participants. Our approach to learning is through discussion, practical workshops and real-life case studies. Training is delivered anywhere, anytime by experienced mining professionals. Our training courses are delivered by experienced mining professionals, and will ensure you remain up-to-date in the effective use of the solutions.

To find out more visit

> www.rpmglobal.com/training/

Software



XPAC Solutions



XERAS Enterprise



AMT



MinVu



XECUTE



HAULSIM



XPAC



XERAS



XACT



TALPAC



DRAGSIM



SIMULATE



MINVU SHIFT MANAGER

Professional Development



Mining for Non-Miners

- Coal & Metals
- Coal
- Metals
- Oil Sands
- Advanced UG Coal



Mining Economics

- Industry Leading Course



Mine Planning

- Draglines
- Truck & Loader
- Surface Coal



Asset Management

- Fundamentals
- Life Cycle Costing

RPMGLOBAL

WWW.RPMGLOBAL.COM

Follow us on social media:



rpmglobal



@RPMmining



RPMGlobal

