



The new era of mine closure and rehabilitation requires **a holistic, integrated and adaptive approach**, with mine closure solutions focused on progressive strategies that are implemented from feasibility right through to relinquishment.

RPMGlobal seamlessly brings together its ESG, mining advisory and software services to support mining clients in developing their ongoing closure plans, estimates and rehabilitation assessments.

Rehabilitation and Closure as a key stage of mine planning

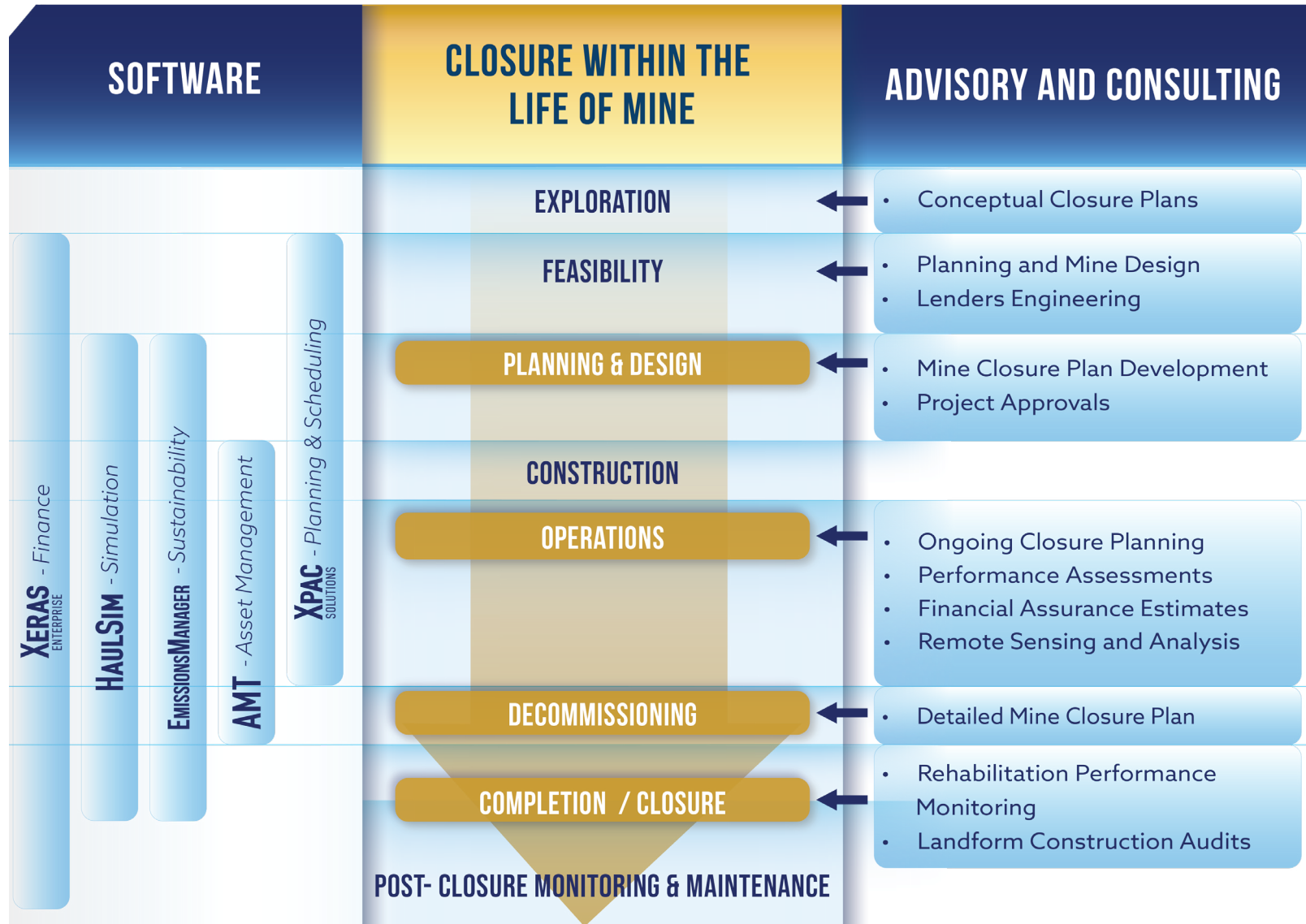
We consider rehabilitation and closure to be an integral part of the mine planning process. Right through the life cycle of a mining assets development, achievable and adaptable closure outcomes need to be considered, along with their cost viability and the broader strategic plans for the asset's development. By conducting engineering led design, RPMGlobal is able to draw multidisciplinary technical information from environmental geochemistry right through to social performance criteria. This feeds into the life of mine plan right through to the post mining land outcomes in a cost effective and proactive manner.

RPM delivers mine closure and rehabilitation strategies to mining clients on a global scale including but not limited to:

- Development of Mine Closure Plans (MCP)
- Closure management and rehabilitation monitoring
- Closure cost estimates and financial provisioning
- Compliance audits and reporting; and
- Relinquishment planning.



A Mulidisciplinary Solution Tailored to your Project

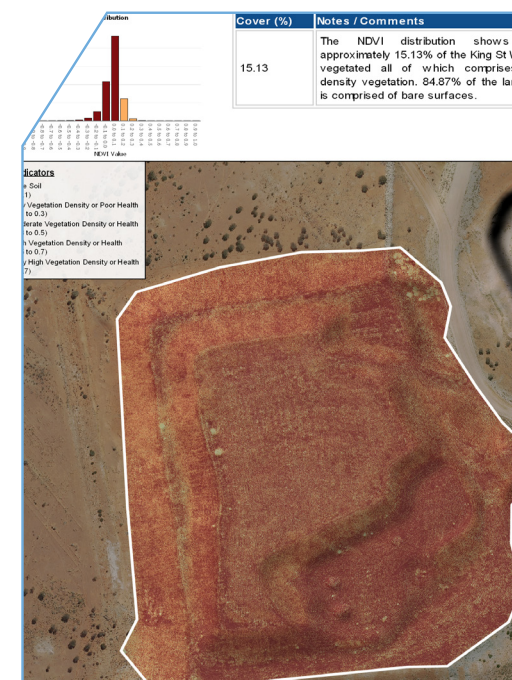
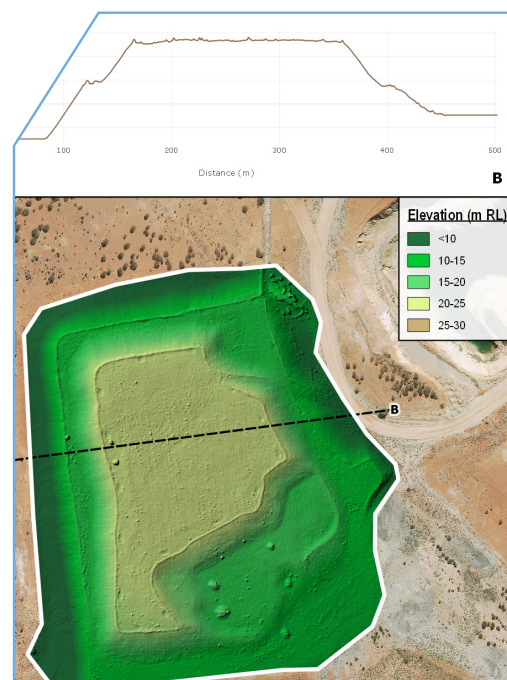


Integrating Technology for a Holistic Rehabilitation Offering

Using unmanned aerial vehicles (UAV) and Satellite Image Technologies, RPM has developed an assessment process that results in reduced survey times, costs and a significantly improved dataset when compared to using a traditional methodology alone.

RPM provides:

- Remote sensing via unmanned aerial vehicles (UAV) and Satellite Image Technologies.
- Assessment of landform rehabilitation via UAV including abandonment bund audits, waste landform construction parameters, vegetation health and density, and erosion features.



Technology advances our mine closure and rehabilitation offering

Experience

Our team has extensive experience undertaking mine closure planning works on a global level.



■ Countries where RPM have completed projects

■ RPM offices

About RPMGlobal

For more than 5 decades, RPMGlobal has been advancing the mining industry and has been the go-to partner for Software, Advisory and Consulting, and Training. Guided by our underlying principles of mining expertise, innovation and sustainability, we strive to create safer, more efficient and more sustainable operations for our mining customers. Our focus on providing advanced mining technology, together with deep domain expertise across the mining lifecycle enables us to guide customers through the current and emerging challenges being faced by the industry worldwide. This includes helping them meet the shift in social norms and consumer and investor ESG related expectations.

RPMGlobal's software solutions are built on open industry standards and with an enterprise approach to seamlessly connect systems and information across the mining value chain. We take an innovative approach to our development, focusing on solutions that advance what is currently available. This has led us to push the boundaries and utilise the latest technologies to build the next generation of products. We build connected systems to deliver information that amplifies your decision-making capabilities. This all leads to better planning because if you plan better, you have more predictability in outcomes which means safer, more profitable mines that allow you to manage risk and uncertainty.

RPMGlobal's Advisory team advise the global mining industry on their most critical issues and opportunities, from exploration through to mine closure. This extends across physicals, financials and Environmental, Social, and Governance (ESG) factors and commitments. Their deep domain expertise, combined with their culture of innovation and global footprint, ensures our mining customers continue to lead.